

Using ACL's DEMO & software to upgrade firmware

Applies to ACL models 254-202 & 254-203

A. Set up an ACL System.

B. Back up all of the Weld Procedures from your ACL. Then turn off power.

C. Make Bootable USB:

- USB must be formatted (FAT) and blank.
- Download and un-zip the ACL_1702.ZIP or Latest version from MK's WEB.
- Run makeboot.bat (on MS Windows 32) or makeboot64.bat (on MS Windows 64) as administrator and make sure that proper Drive letter is detected for USB stick.

D. Reset Bios : (This set up is based on ASUS mother board model M2N-MX SE PLUS. ASUS (K8V-MX) mother board will be slightly different.)

- Insert the provided USB **bootable** stick into any USB port (i.e. ACL front panel). Fig. 1
- Turn on ACL's power (Fig.2). When the Information screen (Fig. 3) show, press "**Del**" key to get in the **Bios Main menu** (Fig. 4).
- In **Advanced** & USB Configuration Select "USB 2.0 Controller mode at **Full speed** (Fig. 5 and 6).
- In **Boot**, at **Hard Disk Drives** select 1st Drive is USB...
At **Boot Device Priority** select 1st Boot Device is USB...
(By followed Fig. 7 through Fig. 12 consequently).
After Enter "OK". Wait until...

E. Installation firmware: (Apply only for demo version 1702 or Latest)

- As soon as "**ACL starting...**" message appears, press '0' (zero) key on the keyboard (Fig.13 & 14) display should appear the flashing booting words (Fig. 15). Wait for around 5 seconds then...
- If you receive "Procedure load error. Invalid procedure." click OK and continue.
- You should see the main ACL screen now (these perform from Fig. 16, 17 and Fig. 18).
- Move the cursor to the Programs/Upgrade then select **acl_1702.bin or Latest version**. Click on **Accept**, and then **Upgrade** (from Fig.19 to fig.28).
When the Upgrade is finished, turn ACL off and remove USB stick (from Fig.29 to Fig.35).
- Turn ACL power on (Fig.36).
- If you receive "Procedure load error. Invalid procedure." click OK and continue.
- You should see the main ACL screen now.

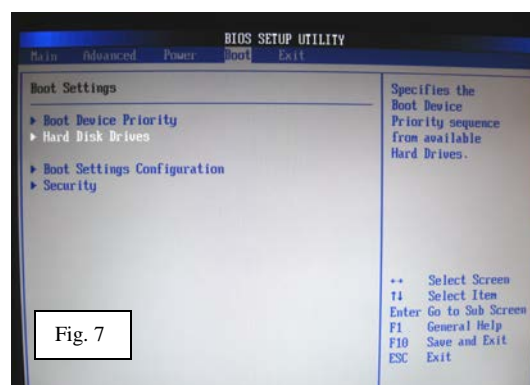
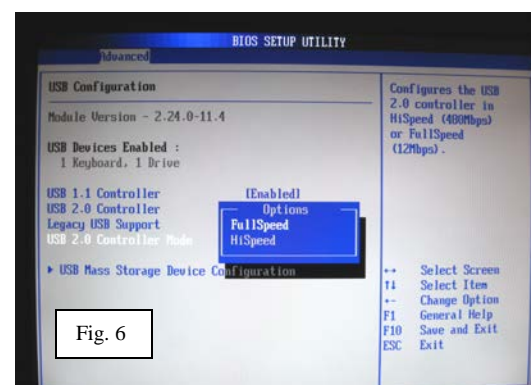
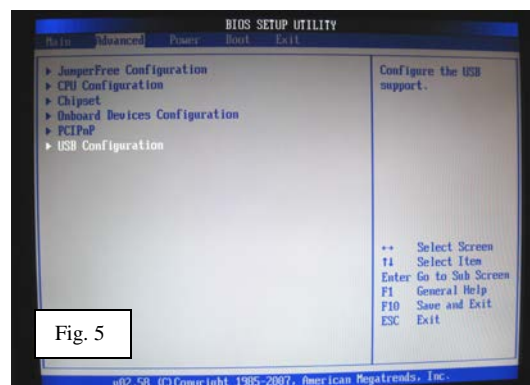
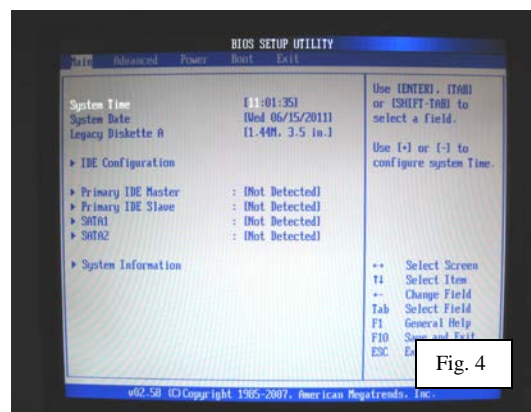
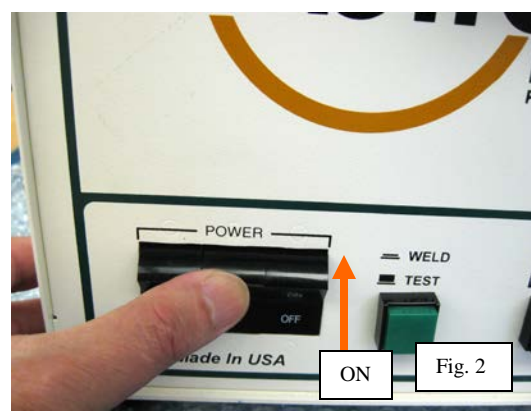
Note: - The "Procedure load error. Invalid procedure." error means that your default startup procedure is either not specified or not found.

You can specify your default procedure in File/Preferences/Advanced/Default Proc menu.

F. How to verify firmware version: (Apply only for demo version 1702 or Latest)

- Move the cursor to and click on Help/About
(You should see: "ACL3 Version 1702 or Latest version....." inside the dialog window)

Note: - Printer HP DeskJet 3000, 4160, 4260, or similar is used with software version 1702 or Latest.
- Older versions of ACL software (0512; 0806 and 1011) use Epson LX-300 printer.



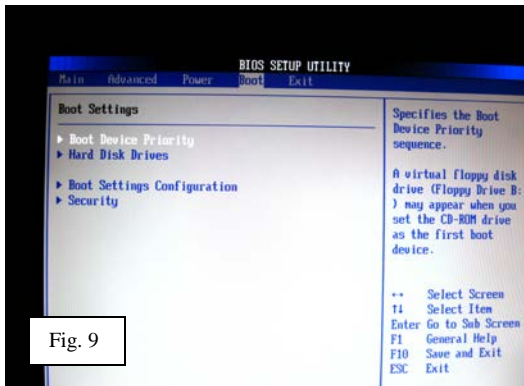


Fig. 9

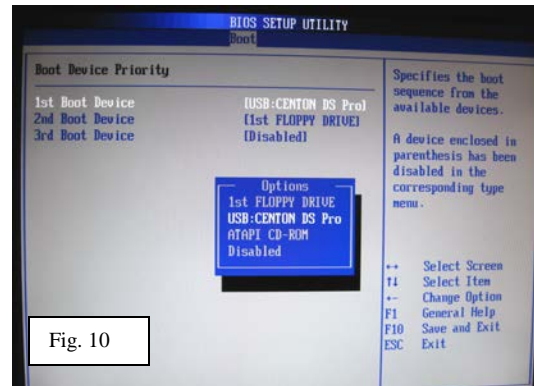


Fig. 10

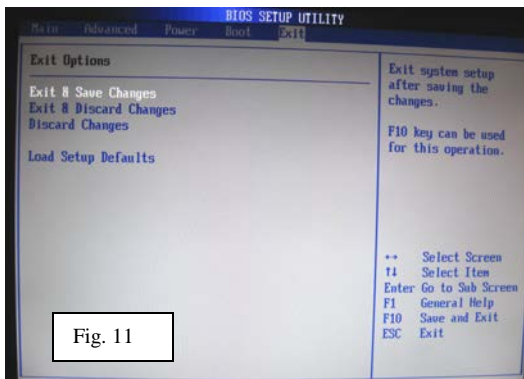


Fig. 11

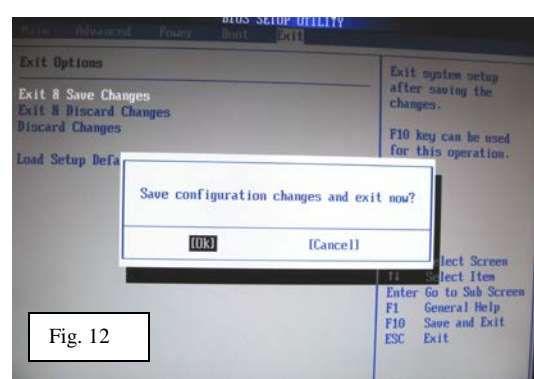


Fig. 12

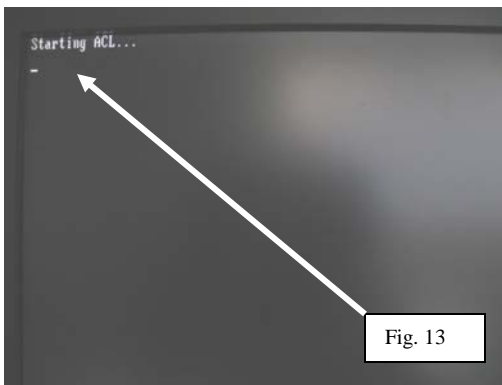


Fig. 13



Fig. 14

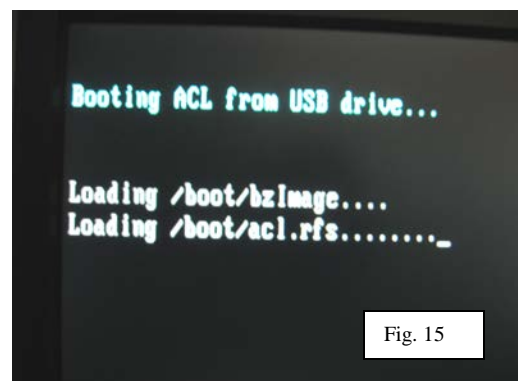


Fig. 15



Fig. 16

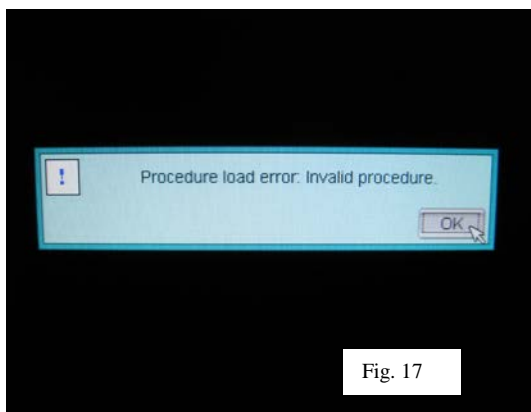


Fig. 17

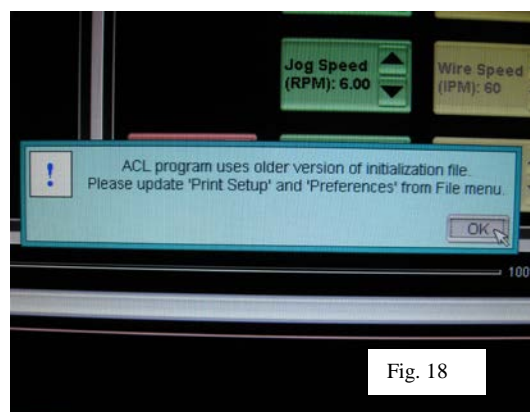


Fig. 18



Fig. 19

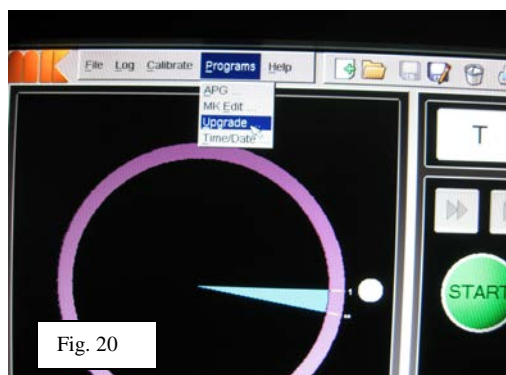


Fig. 20

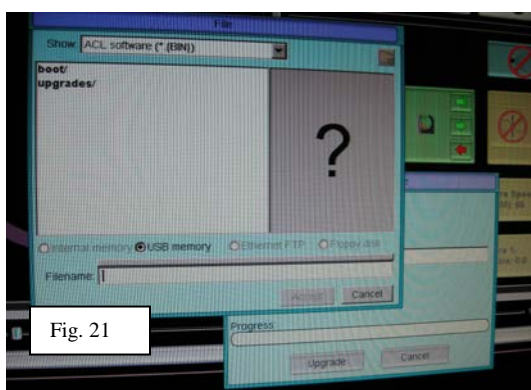


Fig. 21

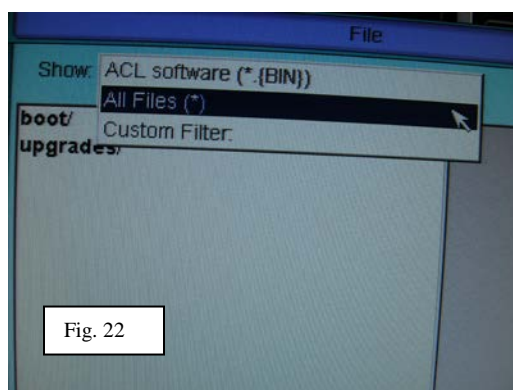


Fig. 22

