



Additional Enhancements For Aluminum Capabilities

Drive Roll Kits

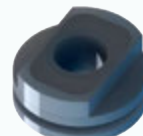
Insulated Grooved Drive Roll Kits - Optional

The Insulated Grooved Drive Kits are designed to fit all models of MK welding guns. Insulated Grooved Drive Rolls are used to prevent preheating of the wire which may soften and clog the liner. The picking up of current at the drive rolls (rather than at the contact tip) is usually not a problem unless using too large of a contact tip or welding with excessively oxidized aluminum wire.

WIRE SIZE	KIT P/N
.030 (0.8 mm)	005-0715
.035 (0.9 mm)	005-0716
.040 (1.0 mm)	005-0717
3/64" (1.2 mm)	005-0718
1/16" (1.6 mm)	005-0719



Idler Roll



Grooved Drive Roll

(see table for corresponding kit number)

Knurled Drive Roll Kits - Standard

Our knurled drive rolls are designed to allow the wire to have more surface area contact. This extra contact means more grip and traction. Standard factory installed.

Idler Wire Feed Assembly Kit
(Includes washer and screw)
005-0686



Knurled Drive Roll
511-0101



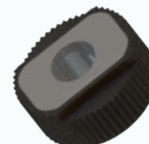
Insulated Knurl Drive Roll Kits - Optional

Our insulated knurled drive rolls kits are designed to fit all models of MK welding guns. The picking up of current at the drive rolls (rather than at the contact tip) is usually not a problem unless using too large of a contact tip or welding with excessively oxidized aluminum wire.

Idler Wire Feed Assembly Kit
(Includes washer and screw)
005-0363



Insulated Knurl Drive Roll
511-0180



Also available: Drive Roll Removal Tool (part number 931-0100)

Contact Tips for Hard Wire Welding*

*Steel, stainless steel and flux core steel wires

1/4" DIAMETER - SIDEWINDER®, PRINCE® SG, COBRA® SX, COBRA® MX (CLASSIC CUP)



WIRE SIZE	TIP ID	ARC	TIP LENGTH	QTY	PART NUMBER
.023" (0.6 mm)	.031" (0.8 mm)	Short	1.75" (44.5 mm)	25	621-0328-25
.030" (0.8 mm)	.037" (0.9 mm)	Short	1.75" (44.5 mm)	25	621-0326-25
.035" (0.9 mm)	.040" (1.0 mm)	Short	1.75" (44.5 mm)	25	621-0077-25
.035" (0.9 mm)	.045" (1.1 mm)	Short	1.75" (44.5 mm)	25	621-0002-25

3/8" DIAMETER - COBRAMAX™, PYTHON®, PYTHON® LX, PRINCE® XL, COBRA® MX (MAX CUP)



WIRE SIZE	TIP ID	ARC	TIP LENGTH	QTY	PART NUMBER
.030" (0.8 mm)	.040" (1.0 mm)	Short	1.82" (46.2 mm)	25	621-0396-25
.035" (0.9 mm)	.045" (1.1 mm)	Short	1.82" (46.2 mm)	25	621-0397-25
.045" (1.2 mm)	.054" (1.37 mm)	Short	1.82" (46.2 mm)	25	621-0398-25